



KREISEL Branch office Hamburg

Christian Wienberg / 23.05.2024



- Founded in 2011 as Engineering office for complete plants of 3 former employees from Claudius Peters
- Today around 10-12 employees
- 4 Sales Engineers (C. Wienberg, D. Schwerter, G. Kreisel, H. Groos (40%))
- 3 Project managers (contract engineering) (S. Raninger, J. Sternal, T. Rieck)
- 3 Technical planner & draftsmen (S. Gerber, A. Kirmse, M. Rieger (Thierhaupten))
- 1 Office organiser (H. Groos)
- Annual turnover of Branch office Hamburg 5 -7 Mio EUR

Some main customers of KREISEL Hamburg



- Christian Pfeiffer (as standard supplier for airslide transport systems)
- Cemengal (as standard supplier for pneumatic conveying systems)
- PPC (Southafrica) (exchange of pneumatic screw pumps)
- Opterra (CRH) (exchange of pneumatic screw pumps)
- Several installations at Lafarge HOLCIM, Heidelbergcement, Cemex (exchange of pneumatic screw pumps)
- Loesche (partnership for exchange of pneumatic screw pumps & pneumatic conveying systems)
- ATEC (Loesche-Group) (Bypass dust handling)

- Pneumatic conveying systems of bulk material (Exchange of pneumatic screw pumps)
- Airslide transport systems
- Silos and terminals (Import & Export Terminals/Loading and unloading terminals)
- Pneumatic dosing systems
- Flow control rollers for silo discharge systems
- Two-way valves for conveying pipes
- 3D-Scans on site

Pneumatic conveying systems of bulk material (Exchange of pneumatic screw pumps)

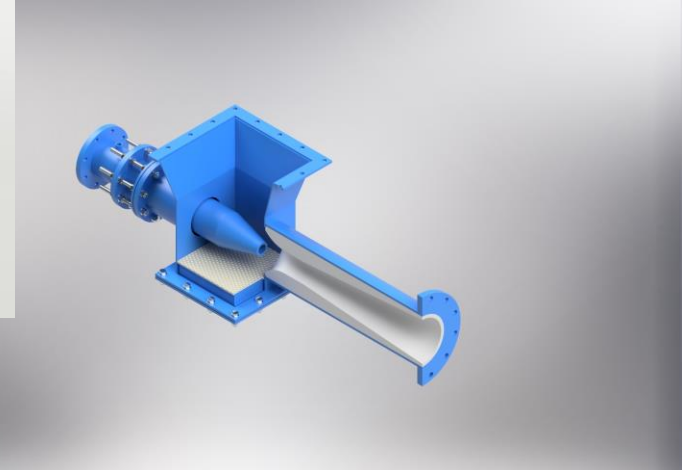
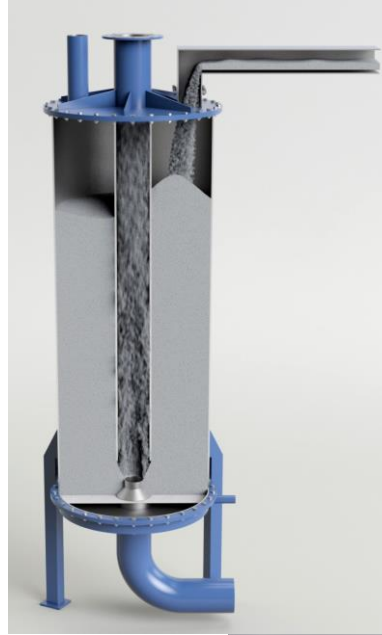
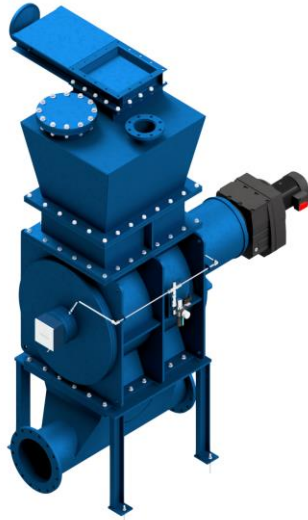
- Conveying capacity: 150 t/h Cement
- Conveying distance: 257 m
- PPC Hercules (South Africa)

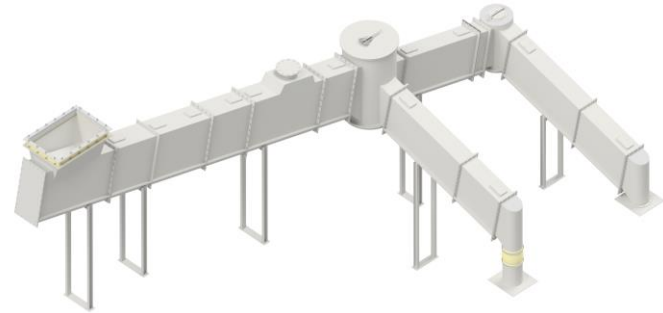
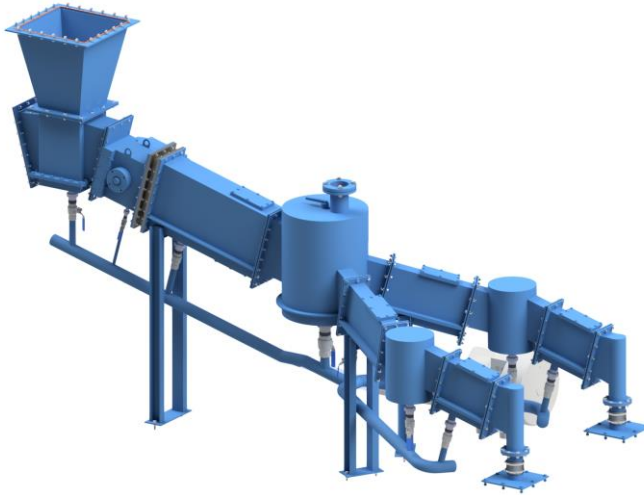
Data	Screw Pump Size 300	Rotary valve Size 700 x 700
Operating hours [h/a]	7500	7500
Energy costs [\$ /kWh]	0.08	0.08
Coupling power of feeding device [kW]	155	5
Coupling power of pressure generator [kW]	336	294
Total energy consumption [kW]	491	299
Total energy consumption per year [kWh /a]	3.682.500	2.242.500
Energy costs per year [\$ /a]	294.600	179.400
Saving of kW/year	1.440.000kW	
Energy cost savings	115.200,-- \$(-39%)	

Pneumatic conveying systems of bulk material (Exchange of pneumatic screw pumps)



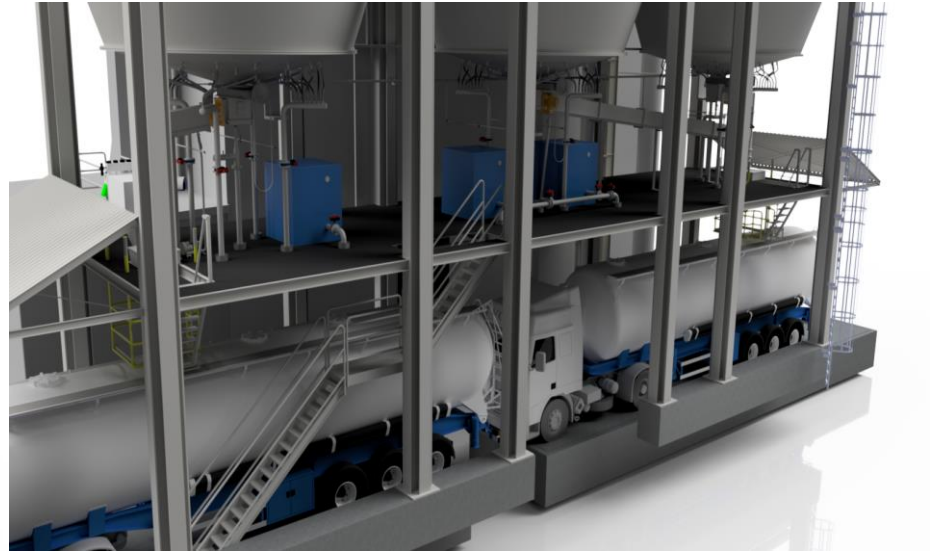
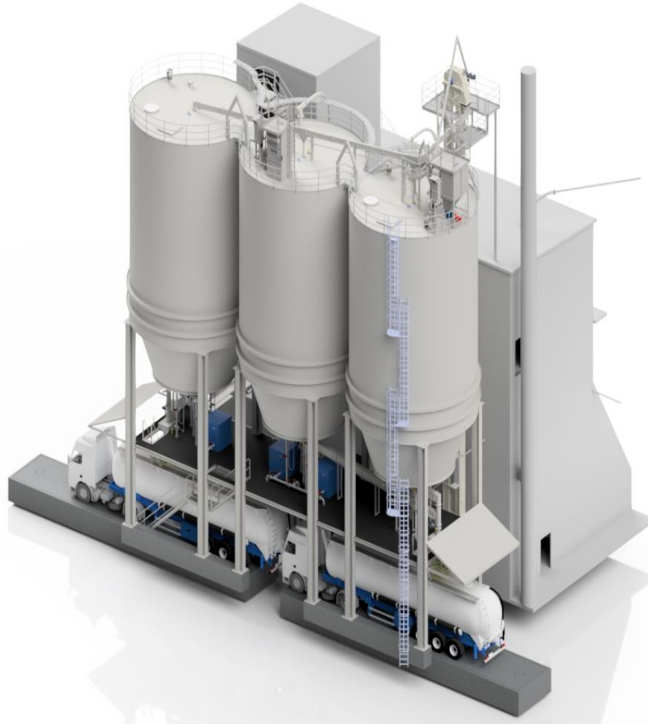
Pneumatic conveying systems of bulk material (Examples)





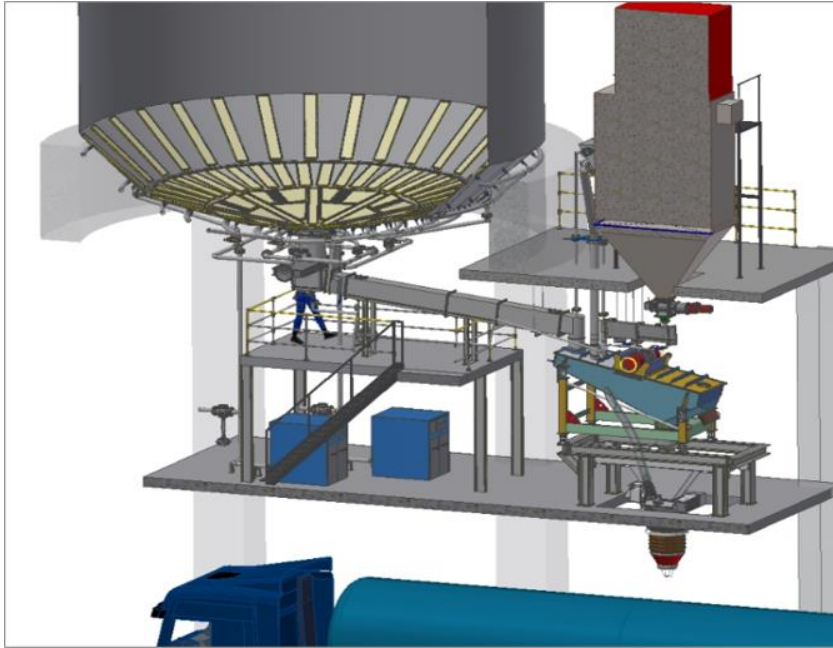
- Complete supply
- Supply of key components and engineering with local fabrication
- Size 100 - 500 (10 – 500 t/h)

Silos and terminals (Import & Export Terminals/Loading and unloading terminals)



Silos and terminals

(Import & Export Terminals/Loading and unloading terminals)

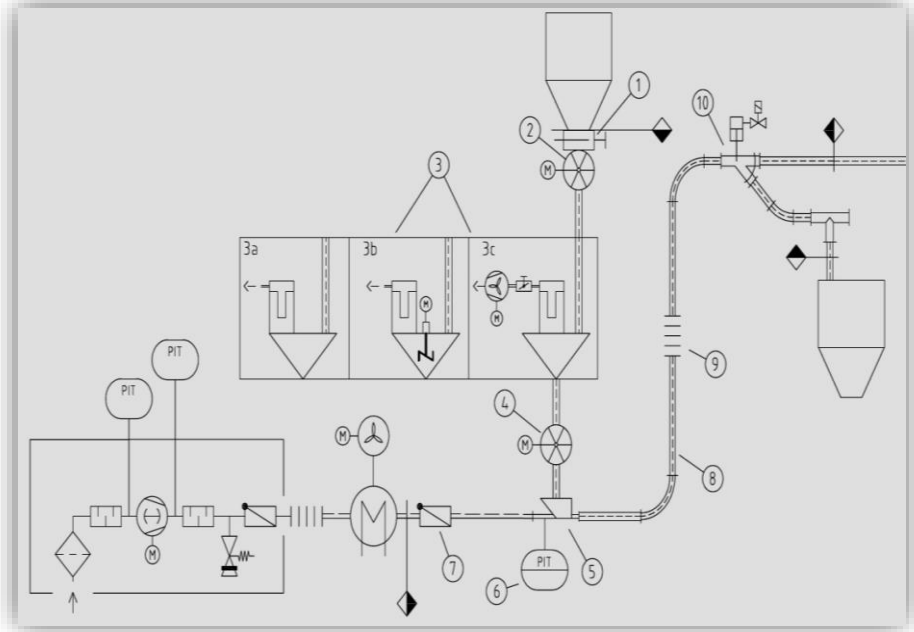
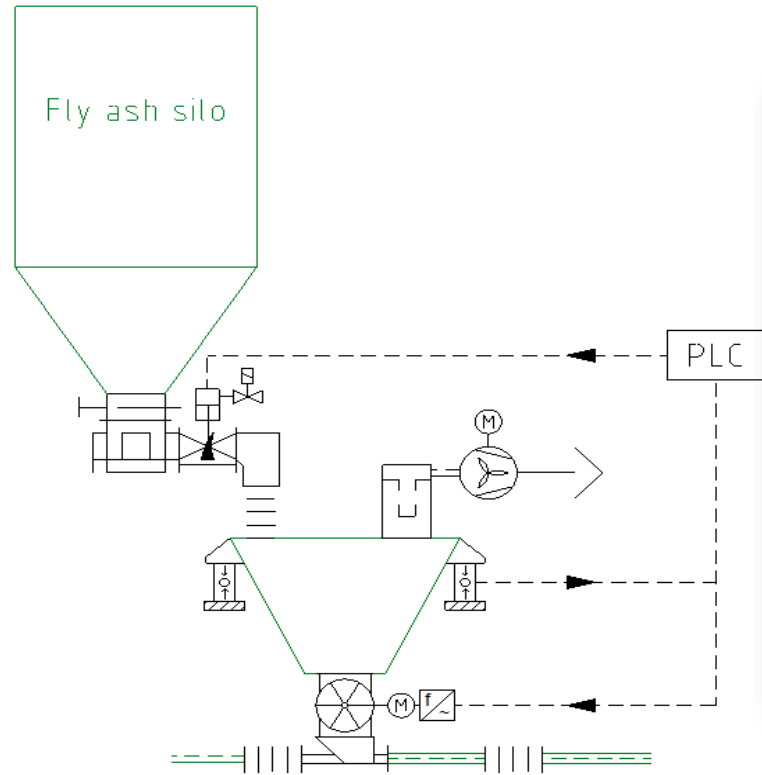


Silos and terminals

(Import & Export Terminals/Loading and unloading terminals)

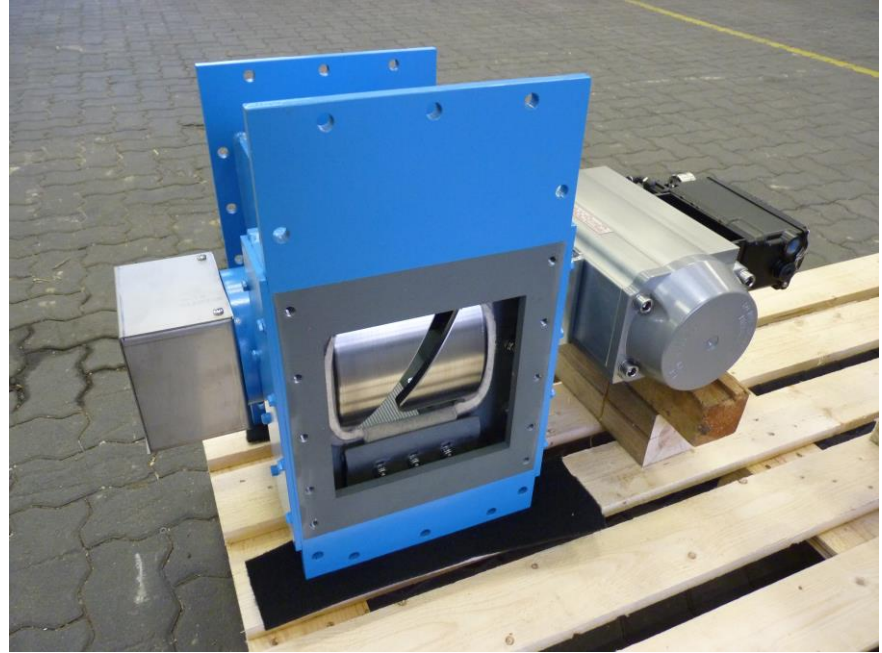
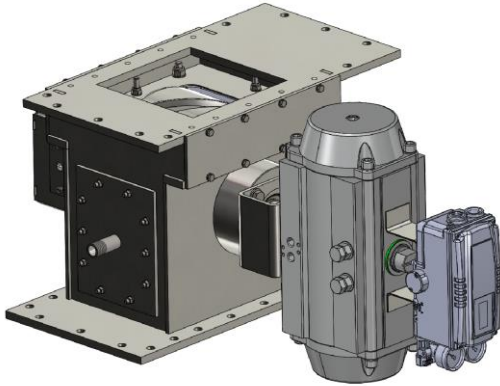


- Complete terminals as turn-key solution in Europe
- Complete terminals out of Europe as sub supplier for key components and Engineering
- Unloading terminals from trucks, wagons and/or ships
- Loading terminals to trucks, wagons and/or ships
- Typical bulk materials: Cement, Fly ash, Lime, Raw meal
- Silo systems for silos with a max. diameter of 14m (concrete/steel silos)
- Silo modifications and optimisations



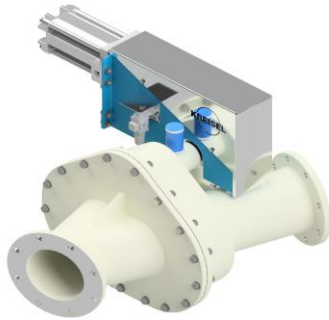
- For cement, fly ash, lime, coal dust (pressure shock resistant up to 10 barg)
- Accuracies max. +/- 3%
- Complete solution with PLC

Flow control rollers for silo discharge systems



- For silo discharge systems
- For feeding trucks/wagons
- For feeding airlide transport systems
- For feeding flowmeters (Multistream, Multicor)
- Size 200 - 500 available
- Pneumatic actuated or motorized

Two-way valves for conveying pipes

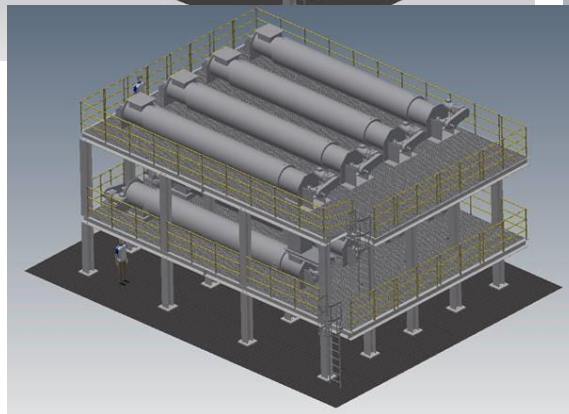
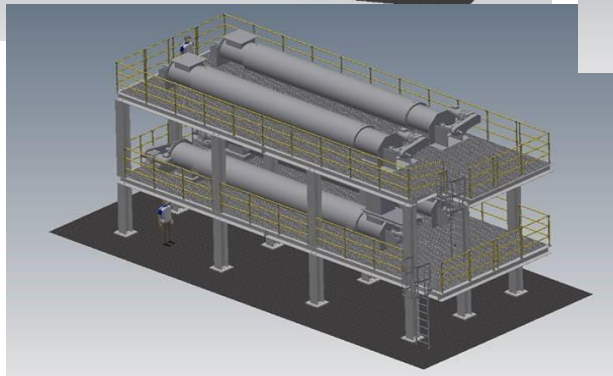
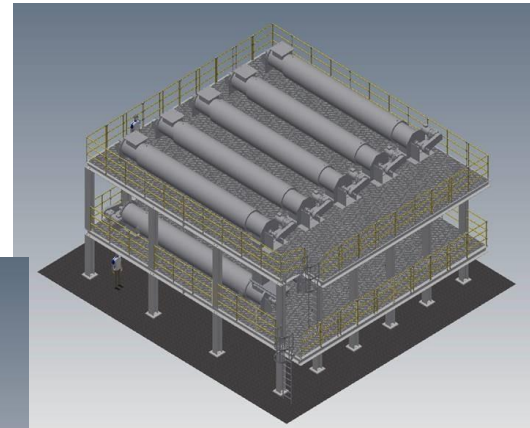
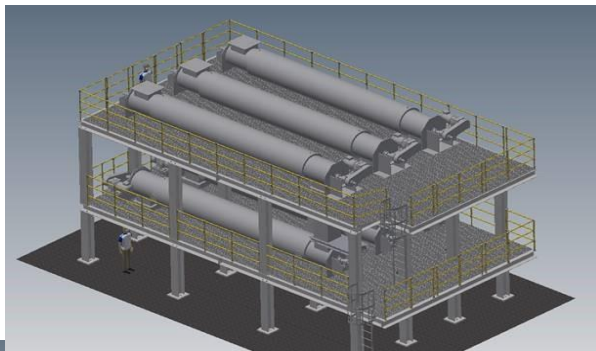
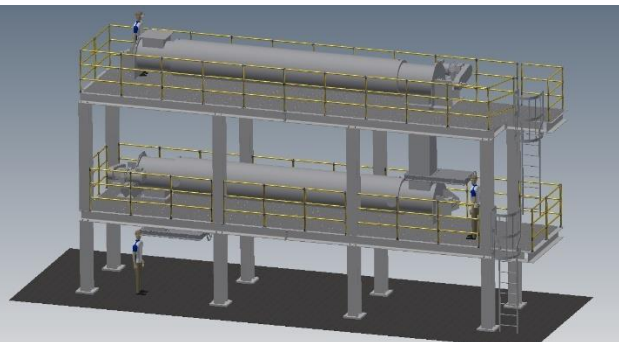


- For conveying pipes
- DN80-DN350
- Motorized/pneumatic actuator
- Max. conveying air pressure of 1,5 barg

- If no actual installation drawings are available
- For pre engineering projects
- As part of contract engineering
- Creation of 2D-Drawings and AutoCAD-drawings as well as of step-files

- KREISEL Modular Cooling System KM® is the state of the art modular system for cooling calcined clay from 800°C to 100°C by water-cooled screw conveyors.
- The industrial design of this system which is registered at the European Trademarks and Design Office of this system allows a simple installation on site.
- Depending on the customer's requirements, Kreisel only supplies the engineering as well as the complete system - also already pre-assembled for a quick installation.
- The customer chooses the number of modules depending on the conveying capacity (20 – 100 t/h).
- Another innovative and clever idea from Kreisel !

What is new in Hamburg ?





Any questions or any further informations required?

Please let me know!

christian.wienberg@kreisel.eu

Tel.: +49-40-79012-872

Thanks for your attention!